



ભક્તકવિ નરસિંહ મહેતા યુનિવર્સિટી

સરકારી પોલીટેકનીક કેમ્પસ, ભક્તકવિ નરસિંહ મહેતા યુનિવર્સિટી રોડ ,ખડિયા

જૂનાગઢ,ગુજરાત (ભારત) ફો.(ઓ) :૦૨૮૫ -૨૬૮૧૪૦૦

Website :<http://www.bknmu.edu.in>

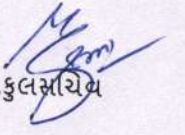
Email : info@bknmu.edu.in

પરિપત્ર

વિષય : આર્ટીફિશીયલ ઈન્ટેલીજન્સ સ્વ-લર્નિંગ ઓનલાઇન પ્રોગ્રામ શરૂ કરવા બાબત

ઉપરોક્ત વિષય અન્વયે ભક્તકવિ નરસિંહ મહેતા યુનિવર્સિટી-જુનાગઢ સંલગ્ન તમામ કોલેજોના આચાર્યશ્રીઓ, અનુસ્નાતક કેન્દ્રોના વડાશ્રીઓ/અનુસ્નાતક ભવનના અધ્યક્ષશ્રીઓને જણાવવાનું કે શિક્ષણ વિભાગ, ભારત સરકાર અને ઈન્ટેલના સંયુક્ત પ્રયાસોથી "AI FOR ALL" સેલ્ફ લર્નિંગ પ્રોગ્રામ શરૂ કરવામાં આવેલ છે. જેમાં વ્યક્તિ આર્ટીફિશીયલ ઈન્ટેલીજન્સ વિષે પરિચિત થવાના ઉપયોગ અંતર્ગત તૈયાર કરવામાં આવેલ છે, આ પ્રોગ્રામને બે વિભાગમાં વહેંચવામાં આવેલ છે જેમાં AI-અવેર અને AI-એપ્રીસિએટ. ઉક્ત પ્રોગ્રામ વિદ્યાર્થીઓનાં હિતને ધ્યાને રાખી વધુમાં વધુ વિદ્યાર્થીઓ કોર્ષમાં સહભાગી થાય તેવા પ્રયત્નો આપની કક્ષાએથી કરવાનું જણાવવામાં આવે છે.

નોંધ : ૧. ઉક્ત કોર્ષને લગતી તમામ પ્રકારની માહિતી આ સાથે સામેલ છે.


કા.કુલસચિવ

ક્રમાંક : બીકેએનએમયુ/એકેડેમિક ૨૧૩૬ /૨૦૨૧

ભક્તકવિ નરસિંહ મહેતા યુનિવર્સિટી,

ગવર્નમેન્ટ પોલીટેકનીક કેમ્પસ, ભક્તકવિ નરસિંહ મહેતા યુનિવર્સિટી રોડ, ખડિયા, જુનાગઢ

તા. ૦૬/૧૨/૨૦૨૧

પ્રતિ,

ભક્તકવિ નરસિંહ મહેતા યુનિ. સંલગ્ન તમામ કોલેજોના આચાર્યશ્રીઓ, અનુસ્નાતક કેન્દ્રોના વડાશ્રીઓ/અનુસ્નાતક ભવનના અધ્યક્ષશ્રીઓ તરફ

બિડાણ :

માહિતી પુસ્તિકા

નકલ સાદર રવાના :

માનનીય કુલપતિશ્રી/કુલસચિવશ્રીનાં અંગતસચિવશ્રી

નકલ સાદર રવાના જાણ તથા યોગ્ય કાર્યવાહી અર્થે :

આઈ.ટી. સેલ (વેબસાઈટ પર પ્રસિદ્ધ કરવા અર્થે)

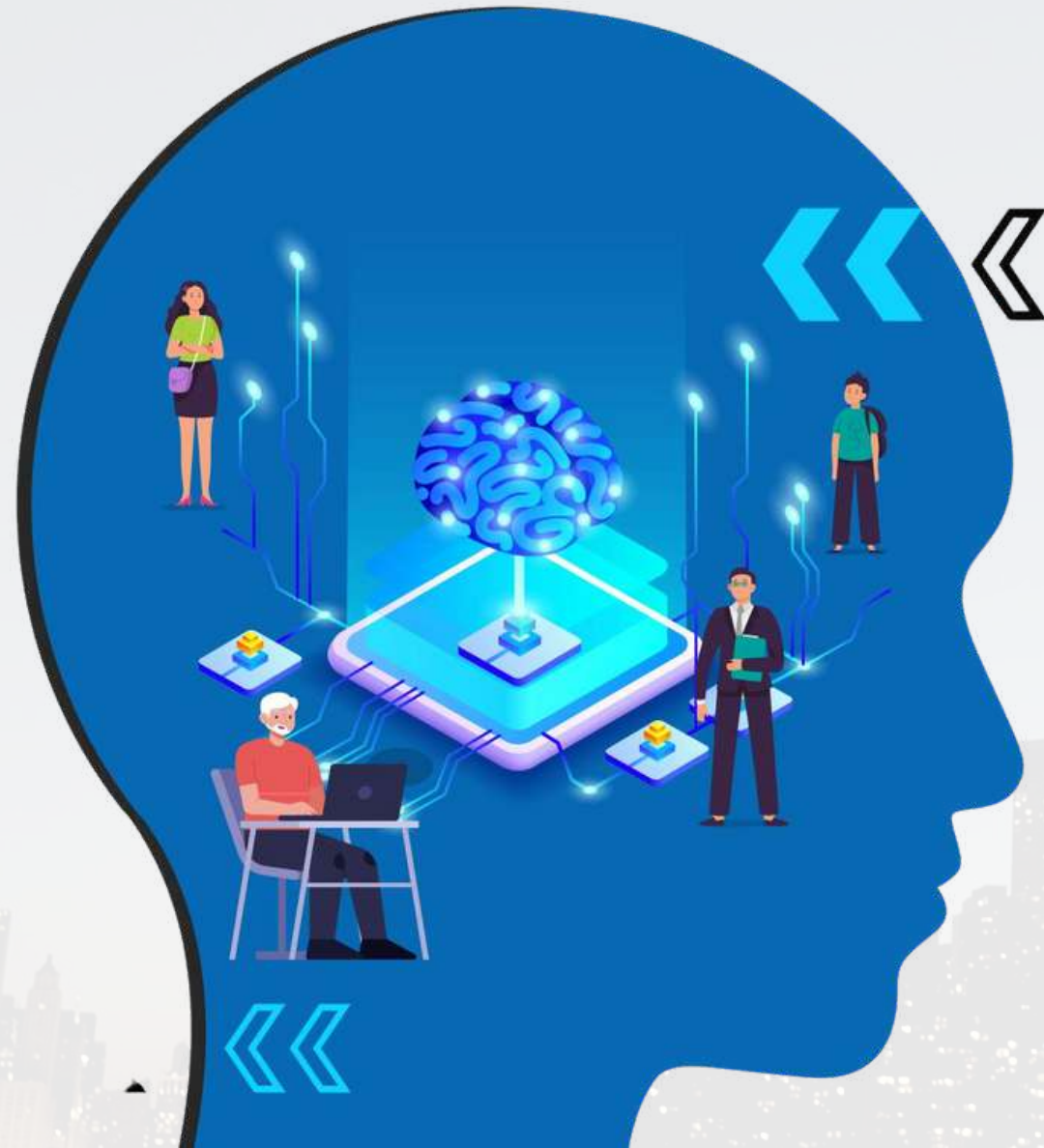


Ministry of Education
Government of India



WELCOME TO

AI FOR ALL



AI For All is a self-learning program designed for people from all walks of life – a student, a stay at home parent, a professional in any field, a senior citizen - basically, anyone interested in getting acquainted with Artificial Intelligence (AI).

Let us look at the details of the program ahead.

ABOUT AI FOR ALL

- 1 AI For All is a self-learning online program designed to raise public awareness about Artificial Intelligence.
- 2 The program is your first step towards an AI inclusive world, however, it does not claim to skill/train or make you an AI expert.
- 3 The program's purpose is to enable you to have a basic understanding of Artificial Intelligence and empower you to communicate about it.

The program is divided into two sections.
Completion of each section gets you a digital badge!



AI Aware

- Describe what is AI and appreciate what it can do.
- Become aware of present-day applications of AI.
- Debunk some common misconceptions around



AI Appreciate

- Understand the key domains of AI.
- Appreciate the possibilities, concerns, and ethics.
- Get started with a self-learning plan to explore AI.

PROGRAM BADGE AND DURATION

- 1 At the end of each stage, you will get a personalized badge.
- 2 The program follows a straightforward approach which is arranged in easy to understand, short blocks of information.
- 3 The entire program can be completed in a span of 4 hours.

A hand is shown from the bottom, pointing upwards towards the center of the image. In the center, the word "START" is written in a light blue, sans-serif font, enclosed within a circular graphic composed of several concentric, semi-transparent blue rings. The background is a solid, medium-blue color.

LET'S START OUR AI JOURNEY!

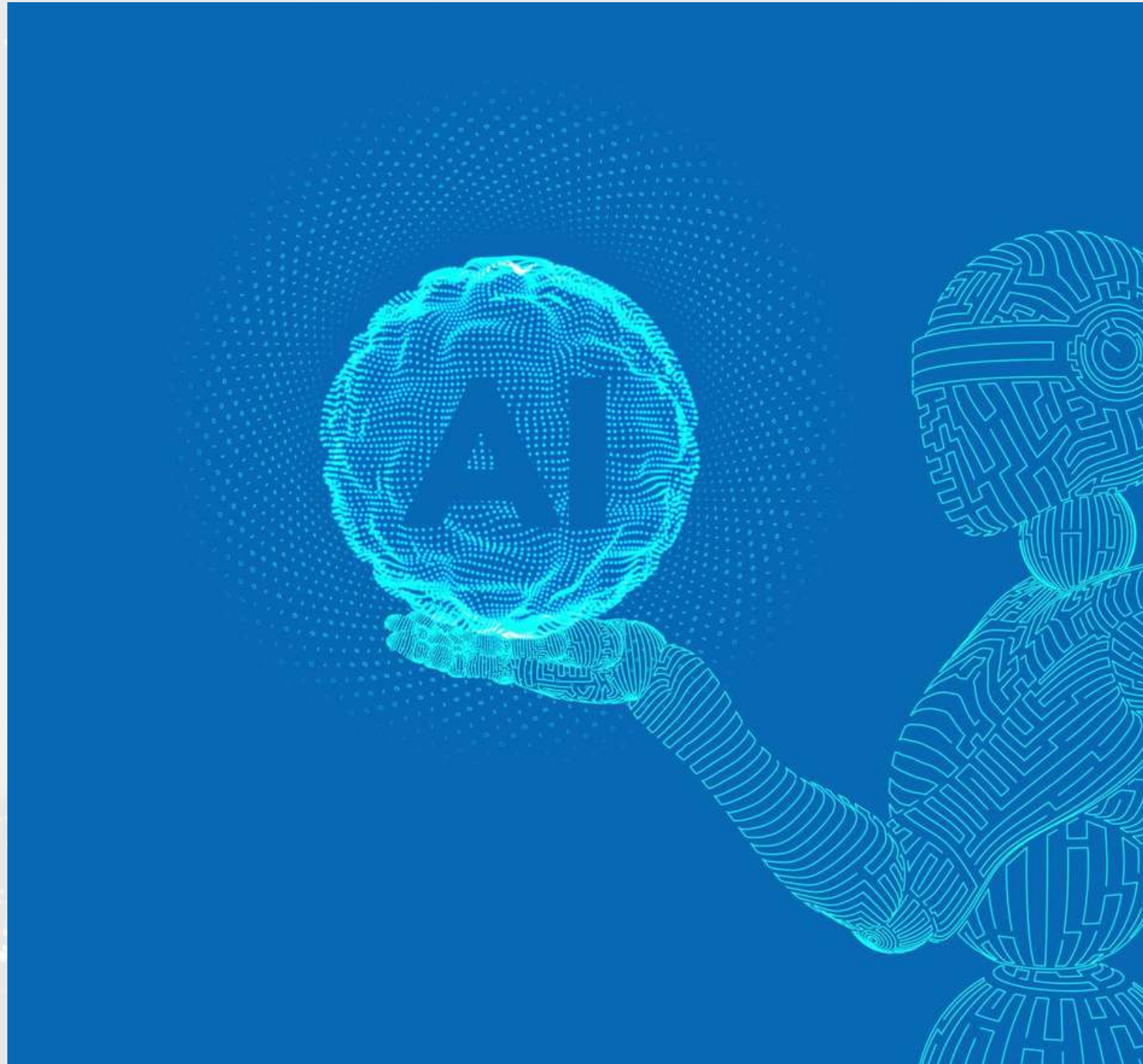
DO NOT WORRY IF YOU ARE NEW TO AI OR HAVE NO PREVIOUS INFORMATION OR EXPERTISE WITH IT. THIS PROGRAM IS YOUR FIRST STEP TOWARDS A WORLD FULL OF POSSIBILITIES WITH AI!



Ministry of Education
Government of India



AI AWARE



In this first section: *AI Aware*, we will walk you through the basic understanding of AI and its powered applications around you. It will also acquaint you with how machines learn, common misconceptions around AI, and more!

You will be given an *AI Aware* badge at the end of this section.

Ready?

Let's start with what intelligence is in the first place

The image features two human heads in profile, facing each other. The heads are rendered in a dark, almost black color, and are overlaid with a complex, glowing orange and yellow circuit board pattern. The pattern consists of various lines, squares, and circles, resembling a printed circuit board (PCB). The background is a solid, dark blue color. A semi-transparent dark blue horizontal bar is positioned across the middle of the image, containing the text "Understanding Human Intelligence" in white, sans-serif font.

Understanding Human Intelligence



INTRODUCTION

1

We, humans, are considered to be an intelligent species.

2

All of us are born with brains and have unique abilities and understanding that we develop over the course of our lifetime!

3

But what do you think makes us intelligent? Let's take a look.



PARAMETERS OF INTELLIGENCE

- 1 Intelligence is a broad term.
- 2 We, humans, are intelligent because we can think logically and respond to the situations, we are in.
- 3 Remember the time when you were asked not to touch fire, but you still did?



EXPERIENCE AND LEARNING

1

Well, experiences like those make us learn a lot, and you surely would not have willfully touched fire ever again!

2

We are also able to understand what others speak, and can even read or write. This ability has given us immense power to communicate.

The background of the slide features a blue-tinted photograph of several people sitting around a table, engaged in a game of chess. The focus is on their hands and the chessboard, which is partially visible in the lower right corner. The overall atmosphere is one of concentration and strategic thinking.

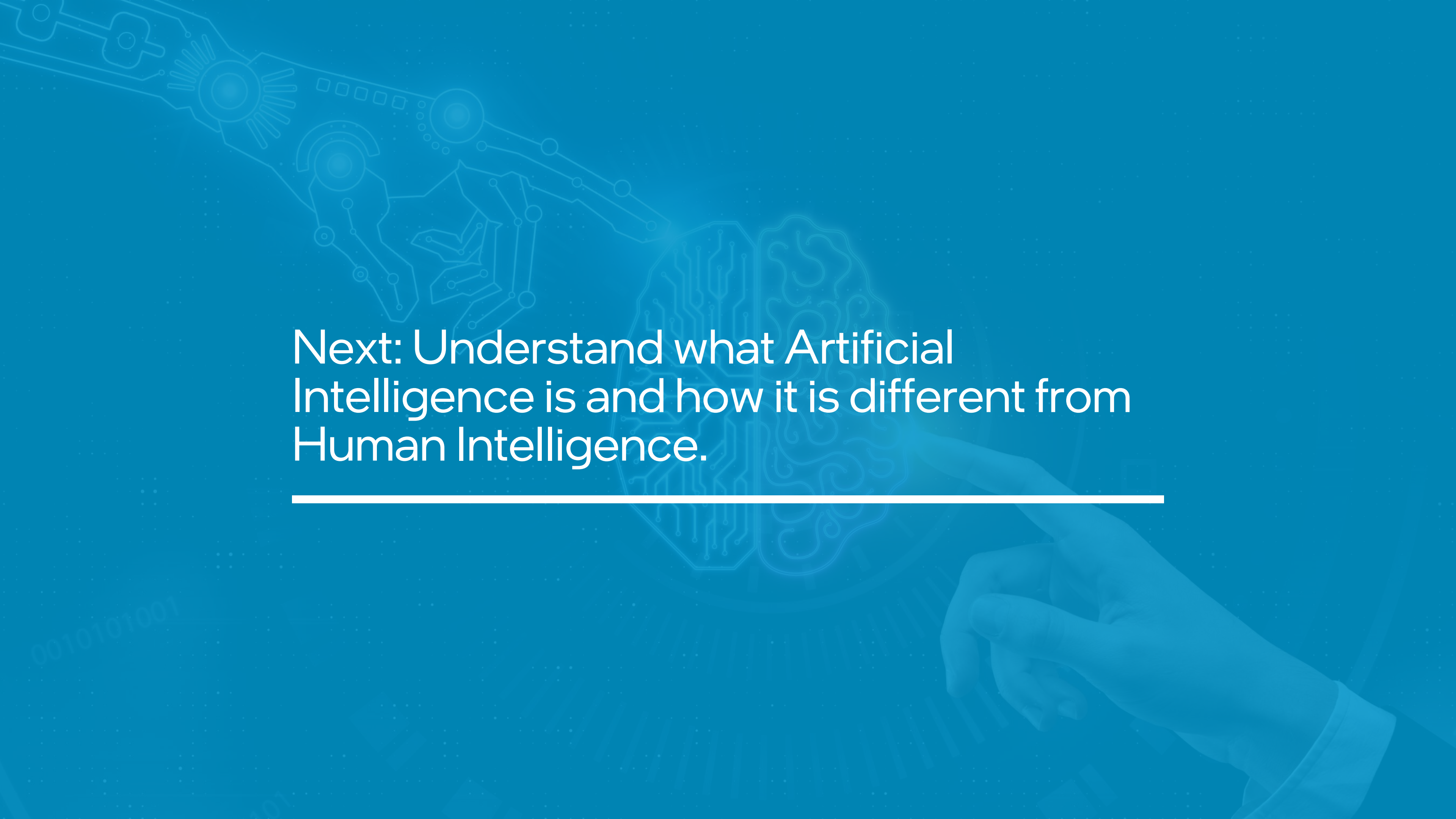
INTELLIGENT ABILITIES

- 1** Our problem solving and critical thinking abilities help us in finding solutions to problems even in uncertain situations.
- 2** We can think clearly, analyze the pros and cons, and finally come up with an answer to the question.

A person is playing chess on a blue and white checkered board. The person's hands are visible, and they are wearing a blue shirt. The background is a solid blue color. The text "THAT'S WHAT YOU CALL INTELLIGENCE" is overlaid in white on the left side of the image.

THAT'S WHAT YOU CALL INTELLIGENCE

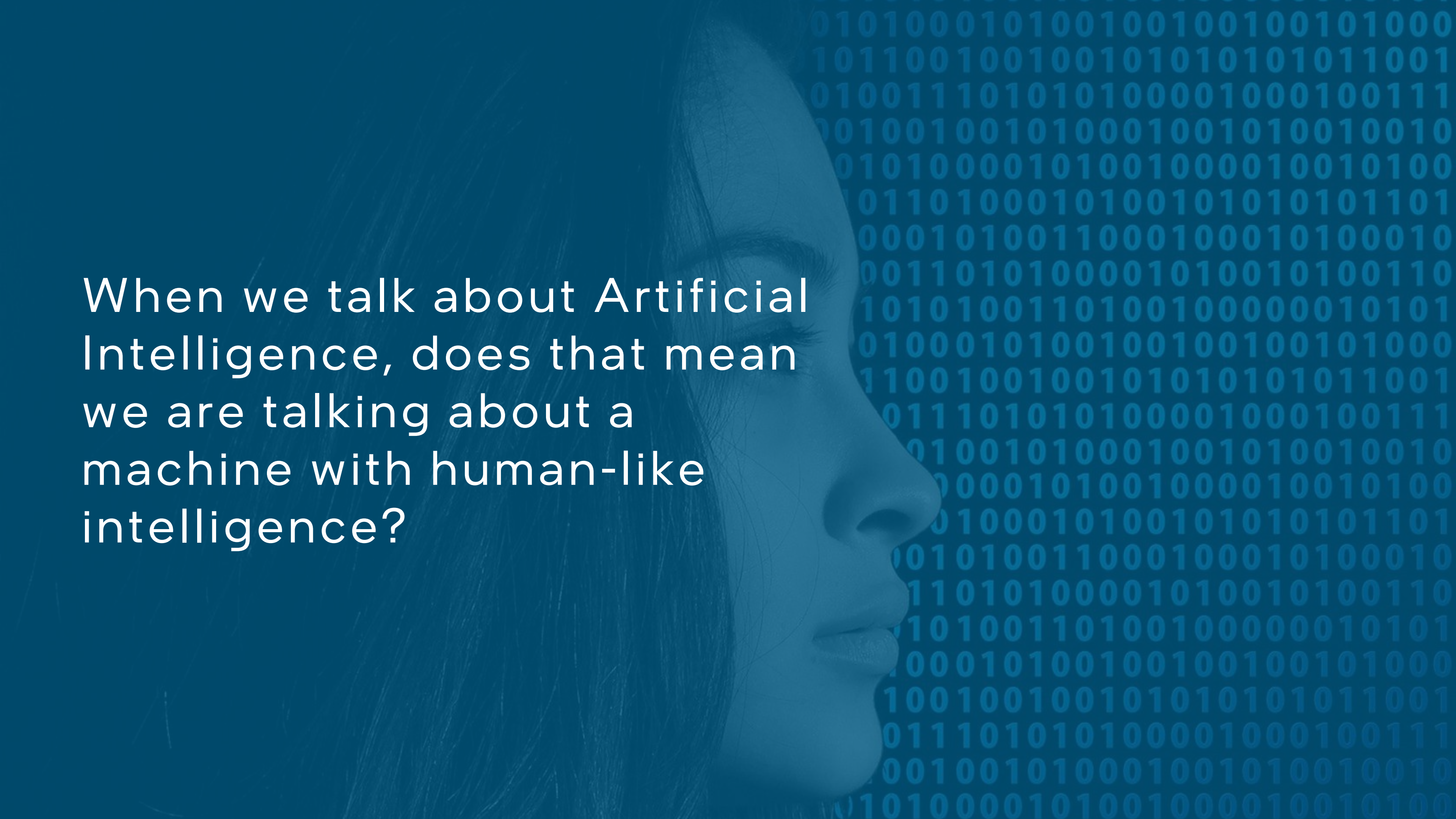
- 1 Also, another important parameter of intelligence is the cognitive and decision-making ability, which we use all the time!
- 2 When should I wake up, what should I eat - all this falls under our intellectual abilities.



Next: Understand what Artificial Intelligence is and how it is different from Human Intelligence.



Introduction to Artificial Intelligence

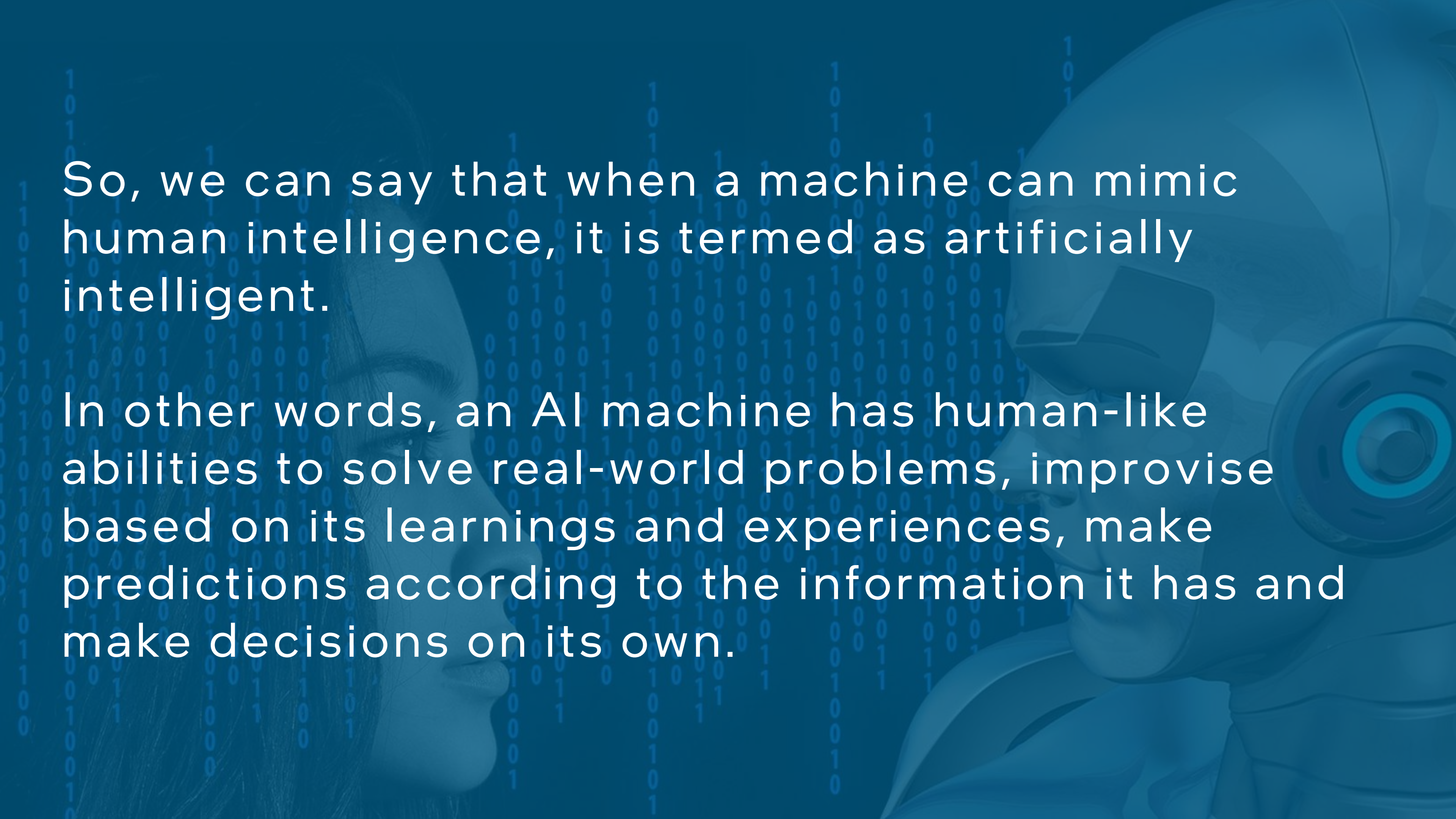
A woman's profile is shown in a blue-tinted image, looking towards the right. The background is a grid of binary code (0s and 1s) in a lighter blue color. The text is overlaid on the left side of the image.

When we talk about Artificial Intelligence, does that mean we are talking about a machine with human-like intelligence?



Well yes. That's what it is!

Artificial Intelligence is the technology that enables a machine to work intelligently and display its ability to learn and solve problems on its own.



So, we can say that when a machine can mimic human intelligence, it is termed as artificially intelligent.

In other words, an AI machine has human-like abilities to solve real-world problems, improvise based on its learnings and experiences, make predictions according to the information it has and make decisions on its own.

AI For All

Public Awareness program launched by Hon'ble PM Narendra Modi

How to start?

1. Scan the QR Code or type <https://bit.ly/guj-ai> your browser
2. Fill simple registration details.
3. Enter OTP and complete verification.
4. Referral Code: [GUJ](#)
5. Complete AI Aware AI Appreciate section.
6. Earn personalised badges and certificates!



<https://bit.ly/guj-ai>

'AI For All' is a self learning online program designed to raise awareness about Artificial Intelligence.

For whom?

STUDENTS, GRADUATES, PARENTS, PROFESSIONALS IN ANY FIELD, SENIOR CITIZENS, BASICALLY ANYONE.



Register now!

Earn badges & certificates!

